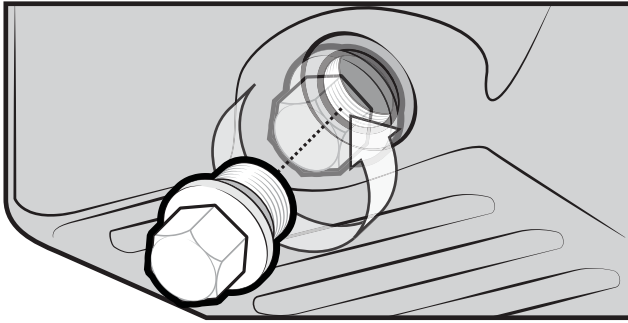


# INSTALLATION INSTRUCTIONS

1

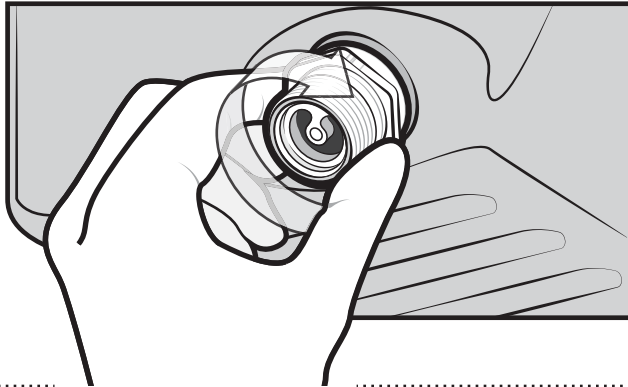


REMOVE THE FACTORY  
DRAIN PLUG FROM YOUR  
OIL PAN.



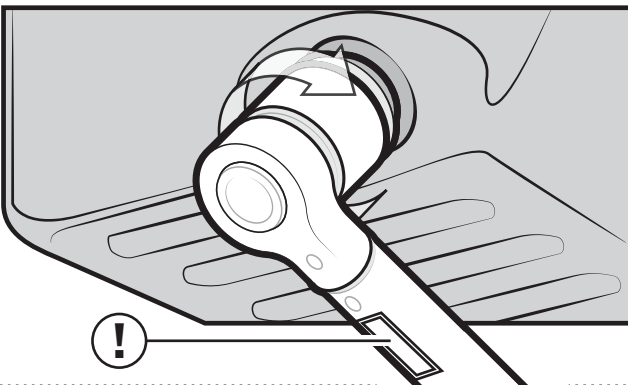
CLEAN OUT THE OIL  
PAN THREADS WITH A  
CLOTH AND BRUSH TO  
ENSURE THERE IS NO  
DEBRIS LEFT IN THE OIL  
PAN THREADS.

2



THREAD IN THE NO-SPILL™ DRAIN PLUG BY  
HAND UNTIL SLIGHTLY SNUG.

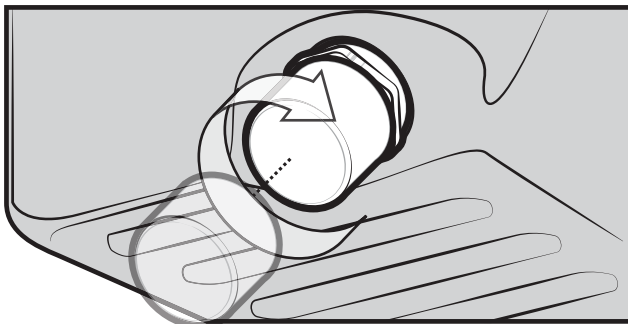
3



USE A TORQUE WRENCH TO TIGHTEN THE  
NO-SPILL™ PLUG TO THE TORQUE SPECIFIED  
ON THE PRODUCT CONTAINER.

PLEASE NOTE: THE SMALLER DIAMETER  
PLUGS REQUIRE A VERY LOW TORQUE. IT IS  
IMPORTANT TO USE A WELL-CALIBRATED  
TORQUE WRENCH AND TO TIGHTEN THE  
PLUG TO THE FOOT POUNDS SPECIFIED.

4

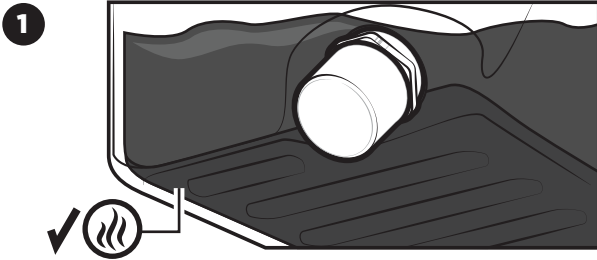


YOUR **NO-SPILL™ DRAIN PLUG** IS  
NOW READY TO USE FOR YOUR  
NEXT OIL CHANGE.

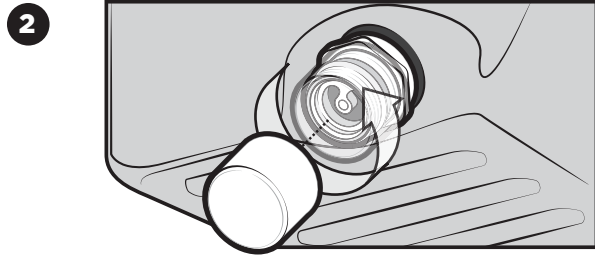
# DRAINING INSTRUCTIONS

SPEED CLICK DESIGN NO-SPILL™ DRAIN PLUG

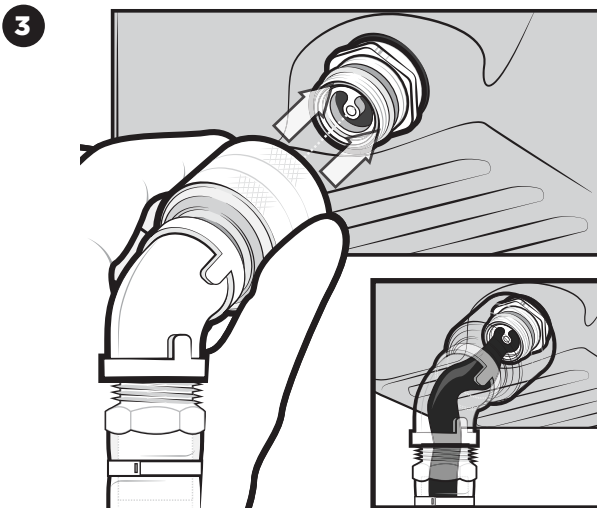
no.  
spill  
SYSTEMS



TO TAKE FULL ADVANTAGE OF MAXIMUM FLOW RATES, BE SURE TO DRAIN YOUR OIL WHEN IT IS HOT.

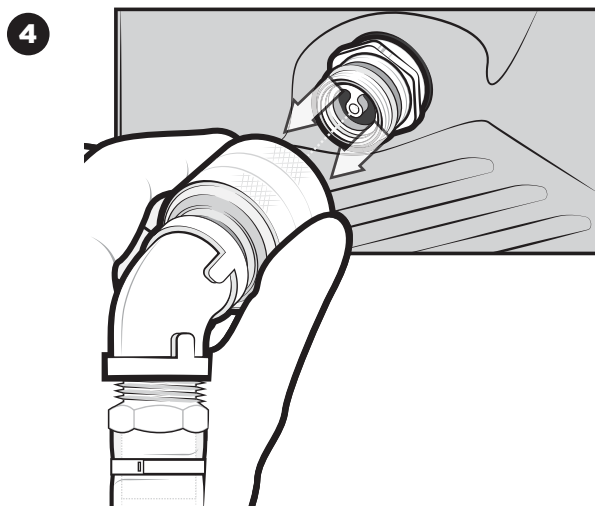


REMOVE THE DUST CAP FROM THE BASE OF THE PLUG.



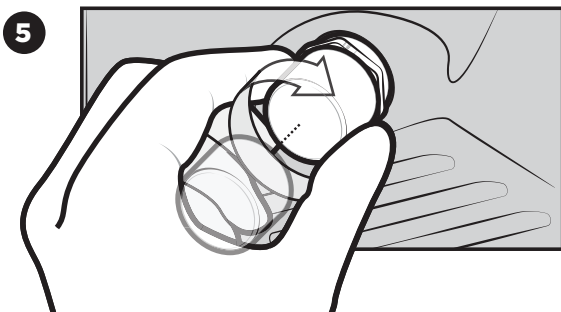
PUSH THE NO-SPILL™ CLICKER ON THE BASE OF THE DRAIN PLUG TO RELEASE THE VALVE, AND TO ALLOW THE WASTE OIL TO FLOW FREELY THROUGH THE CLICKER.

THERE IS NO NEED TO PULL BACK ON THE COLLAR OF THE CLICKER.



REMOVE THE CLICKER BY PULLING BACK ON THE COLLAR OF THE CLICKER.

REMOVING THE CLICKER AUTOMATICALLY CLOSES THE INTERNAL VALVE IN THE DRAIN PLUG.



REPLACE THE DUST CAP UNTIL IT IS HAND-TIGHT.

SPECIAL TOOLS OR TORQUE WRENCHES ARE UNNECESSARY.