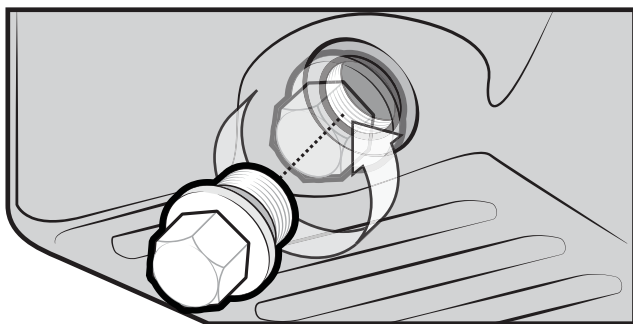


INSTALLATION INSTRUCTIONS

1

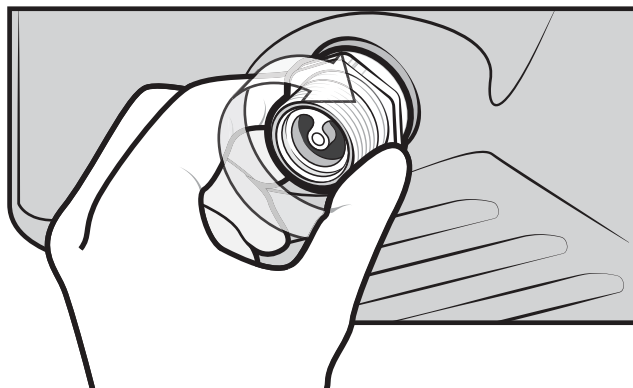


REMOVE THE FACTORY DRAIN PLUG FROM YOUR OIL PAN.



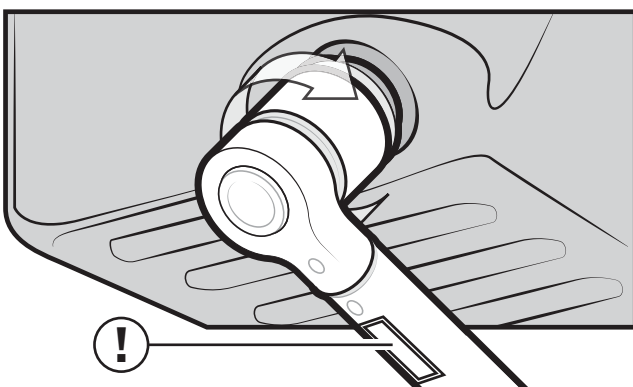
CLEAN OUT THE OIL PAN THREADS WITH A CLOTH AND BRUSH TO ENSURE THERE IS NO DEBRIS LEFT IN THE OIL PAN THREADS.

2



THREAD IN THE NO-SPILL™ DRAIN PLUG BY HAND UNTIL SLIGHTLY SNUG.

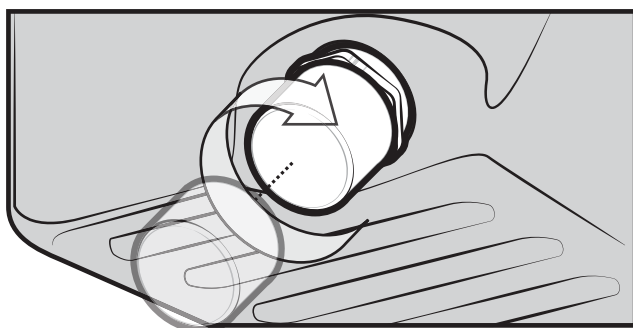
3



USE A TORQUE WRENCH TO TIGHTEN THE NO-SPILL™ PLUG TO THE TORQUE SPECIFIED ON THE PRODUCT CONTAINER.

PLEASE NOTE: THE SMALLER DIAMETER PLUGS REQUIRE A VERY LOW TORQUE. IT IS IMPORTANT TO USE A WELL-CALIBRATED TORQUE WRENCH AND TO TIGHTEN THE PLUG TO THE FOOT POUNDS SPECIFIED.

4

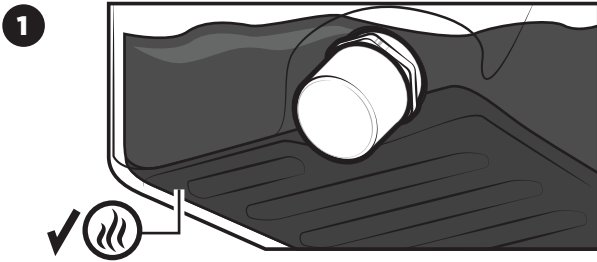


YOUR **NO-SPILL™ DRAIN PLUG** IS NOW READY TO USE FOR YOUR NEXT OIL CHANGE.

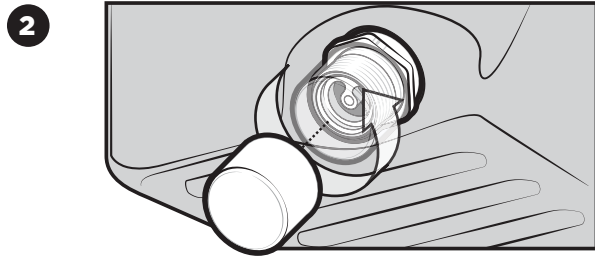
DRAINING INSTRUCTIONS

STANDARD AND COMPACT DESIGN NO-SPILL™ DRAIN PLUG

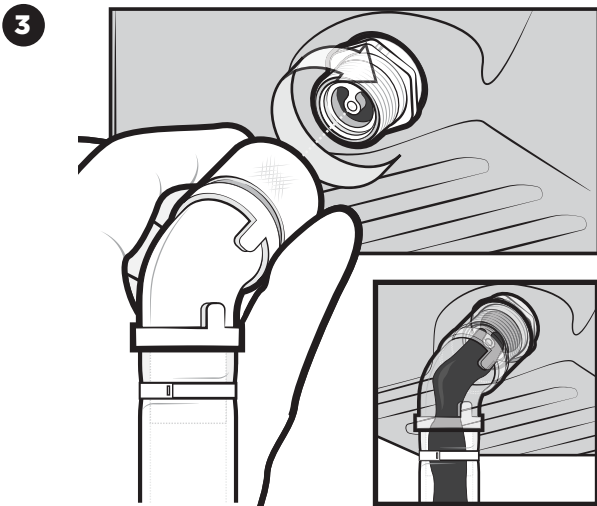
**no.
spill**
SYSTEMS



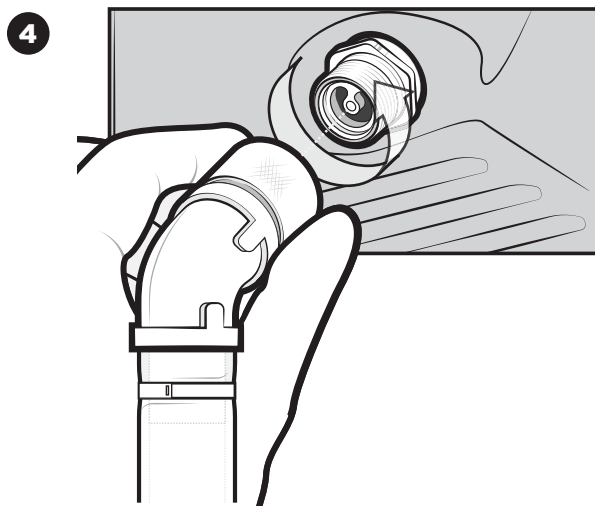
TO TAKE FULL ADVANTAGE OF MAXIMUM FLOW RATES, BE SURE TO DRAIN YOUR OIL WHEN IT IS HOT.



REMOVE THE DUST CAP FROM THE BASE OF THE PLUG.

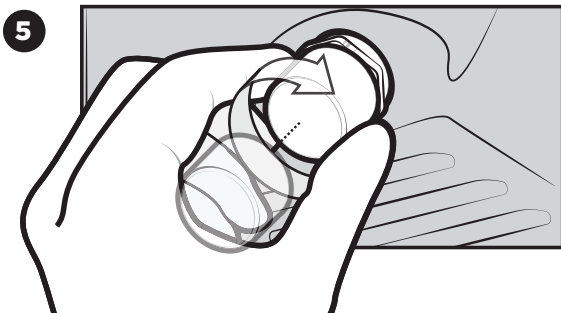


THREAD ON THE DRAINER TO RELEASE THE VALVE, AND TO ALLOW THE WASTE OIL TO FLOW FREELY.



REMOVE THE DRAINER.

UNTHREADING THE DRAINER WILL CLOSE THE INTERNAL DRAIN PLUG VALVE.



REPLACE THE DUST CAP UNTIL IT IS HAND-TIGHT.

SPECIAL TOOLS OR TORQUE WRENCHES ARE UNNECESSARY.